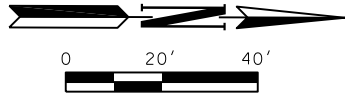
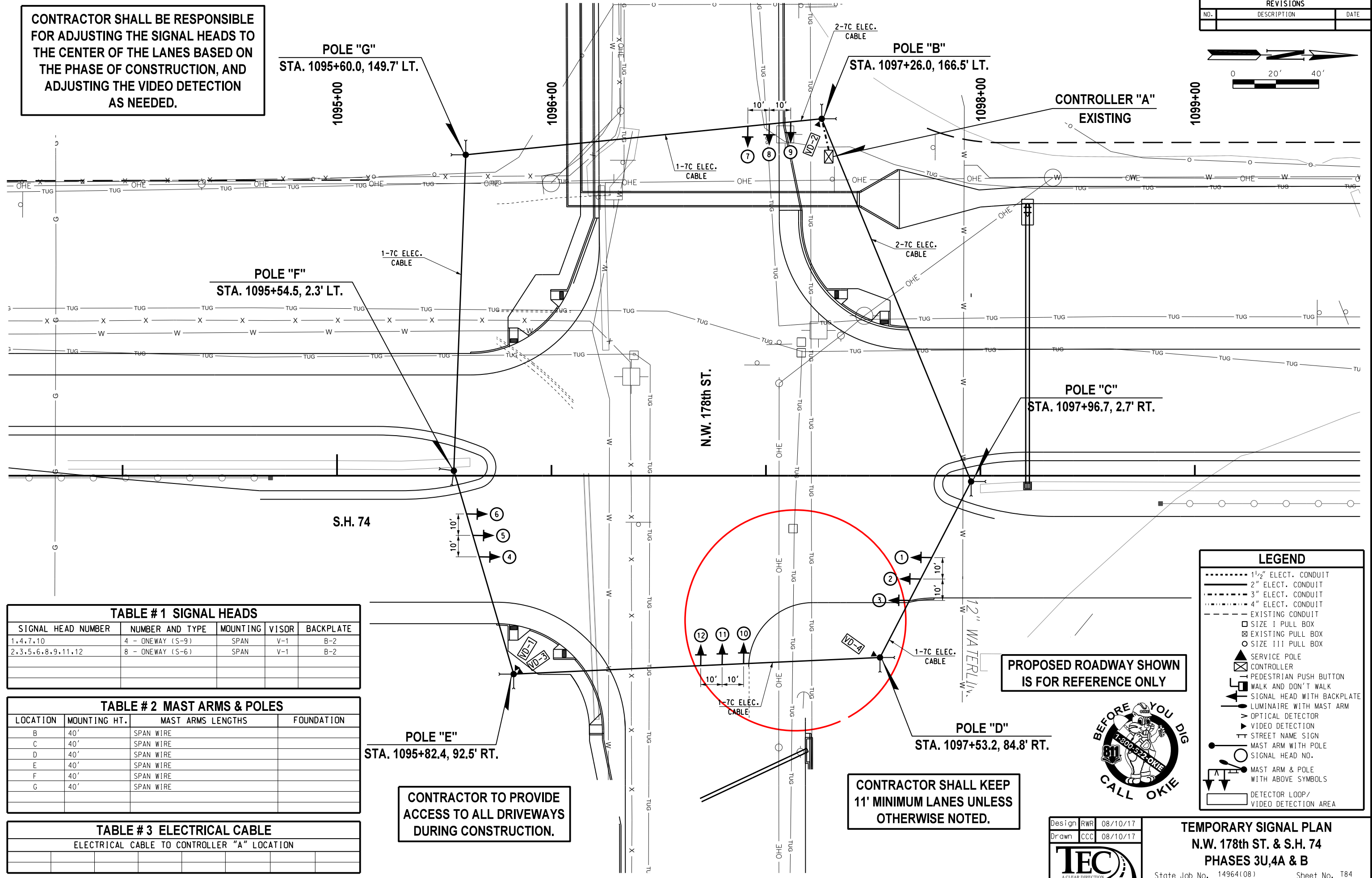


REVISIONS		
NO.	DESCRIPTION	DATE



**CONTRACTOR SHALL BE RESPONSIBLE FOR ADJUSTING THE SIGNAL HEADS TO THE CENTER OF THE LANES BASED ON THE PHASE OF CONSTRUCTION, AND ADJUSTING THE VIDEO DETECTION AS NEEDED.**



**TABLE # 1 SIGNAL HEADS**

SIGNAL HEAD NUMBER	NUMBER AND TYPE	MOUNTING	VISOR	BACKPLATE
1,4,7,10	4 - ONEWAY (S-9)	SPAN	V-1	B-2
2,3,5,6,8,9,11,12	8 - ONEWAY (S-6)	SPAN	V-1	B-2

**TABLE # 2 MAST ARMS & POLES**

LOCATION	MOUNTING HT.	MAST ARMS LENGTHS	FOUNDATION
B	40'	SPAN WIRE	
C	40'	SPAN WIRE	
D	40'	SPAN WIRE	
E	40'	SPAN WIRE	
F	40'	SPAN WIRE	
G	40'	SPAN WIRE	

**TABLE # 3 ELECTRICAL CABLE**

ELECTRICAL CABLE TO CONTROLLER "A" LOCATION				

**LEGEND**

- 1 1/2" ELECT. CONDUIT
- 2" ELECT. CONDUIT
- 3" ELECT. CONDUIT
- 4" ELECT. CONDUIT
- EXISTING CONDUIT
- SIZE I PULL BOX
- ⊠ EXISTING PULL BOX
- SIZE III PULL BOX
- ▲ SERVICE POLE
- ⊠ CONTROLLER
- ⊠ PEDESTRIAN PUSH BUTTON
- ⊠ WALK AND DON'T WALK
- ⊠ SIGNAL HEAD WITH BACKPLATE
- ⊠ LUMINAIRE WITH MAST ARM
- ⊠ OPTICAL DETECTOR
- ⊠ VIDEO DETECTION
- ⊠ STREET NAME SIGN
- ⊠ MAST ARM WITH POLE
- ⊠ SIGNAL HEAD NO.
- ⊠ MAST ARM & POLE WITH ABOVE SYMBOLS
- ⊠ DETECTOR LOOP/VIDEO DETECTION AREA

**PROPOSED ROADWAY SHOWN IS FOR REFERENCE ONLY**

**CONTRACTOR SHALL KEEP 11' MINIMUM LANES UNLESS OTHERWISE NOTED.**

**CONTRACTOR TO PROVIDE ACCESS TO ALL DRIVEWAYS DURING CONSTRUCTION.**



Design RWR 08/10/17  
 Drawn CCC 08/10/17



**TEMPORARY SIGNAL PLAN**  
**N.W. 178th ST. & S.H. 74**  
**PHASES 3U,4A & B**

08/10/17 G:\OP\Projects\1662B\_S.H. 74 @ N.W. 178th.NW\_B2nd & NW 206th\CAD\T.C. SIG 178TH\_PHASE\_4A.dgn